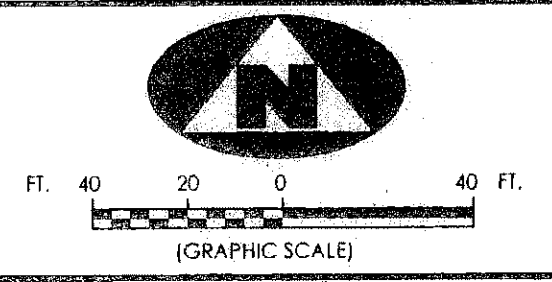
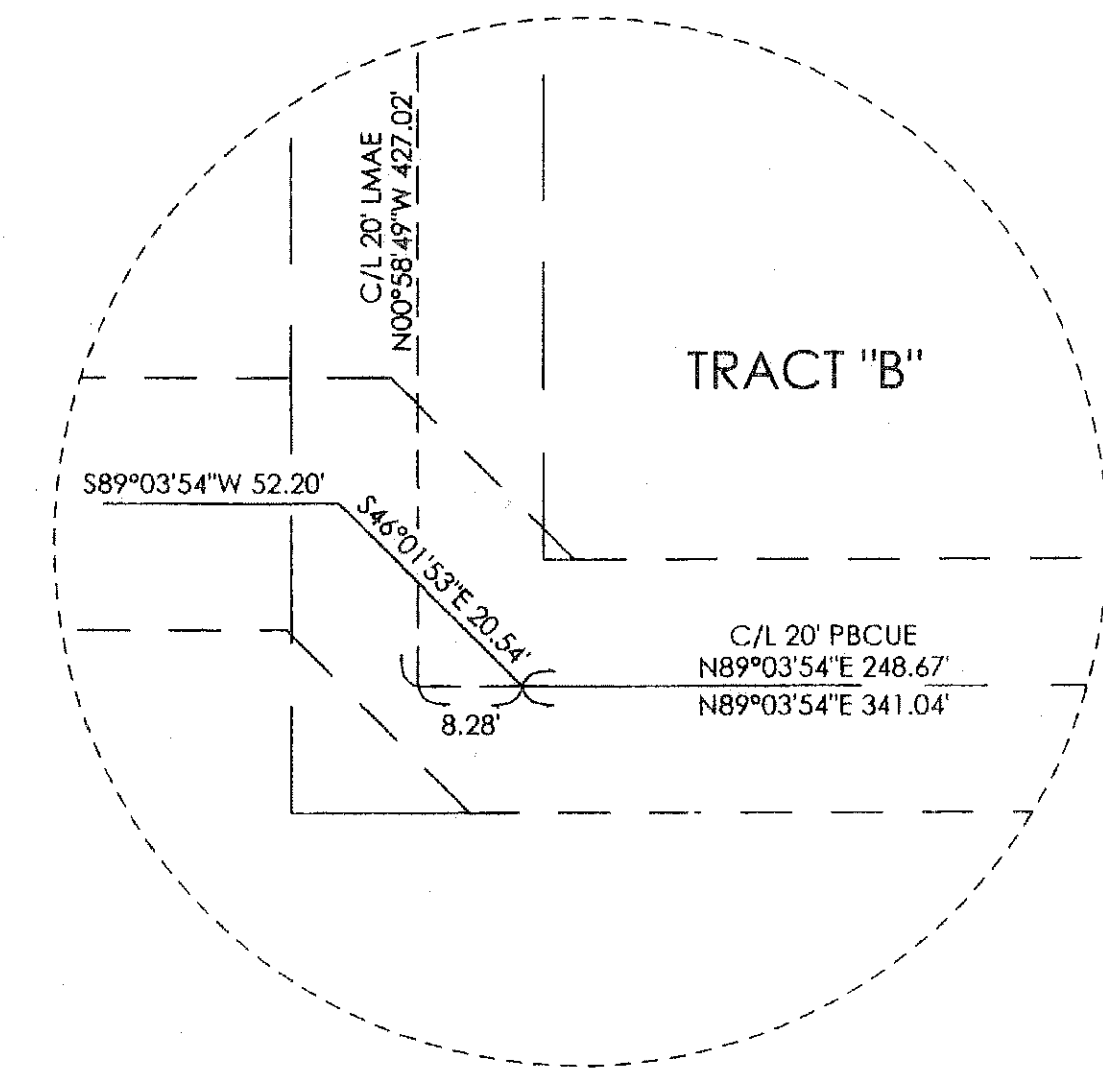
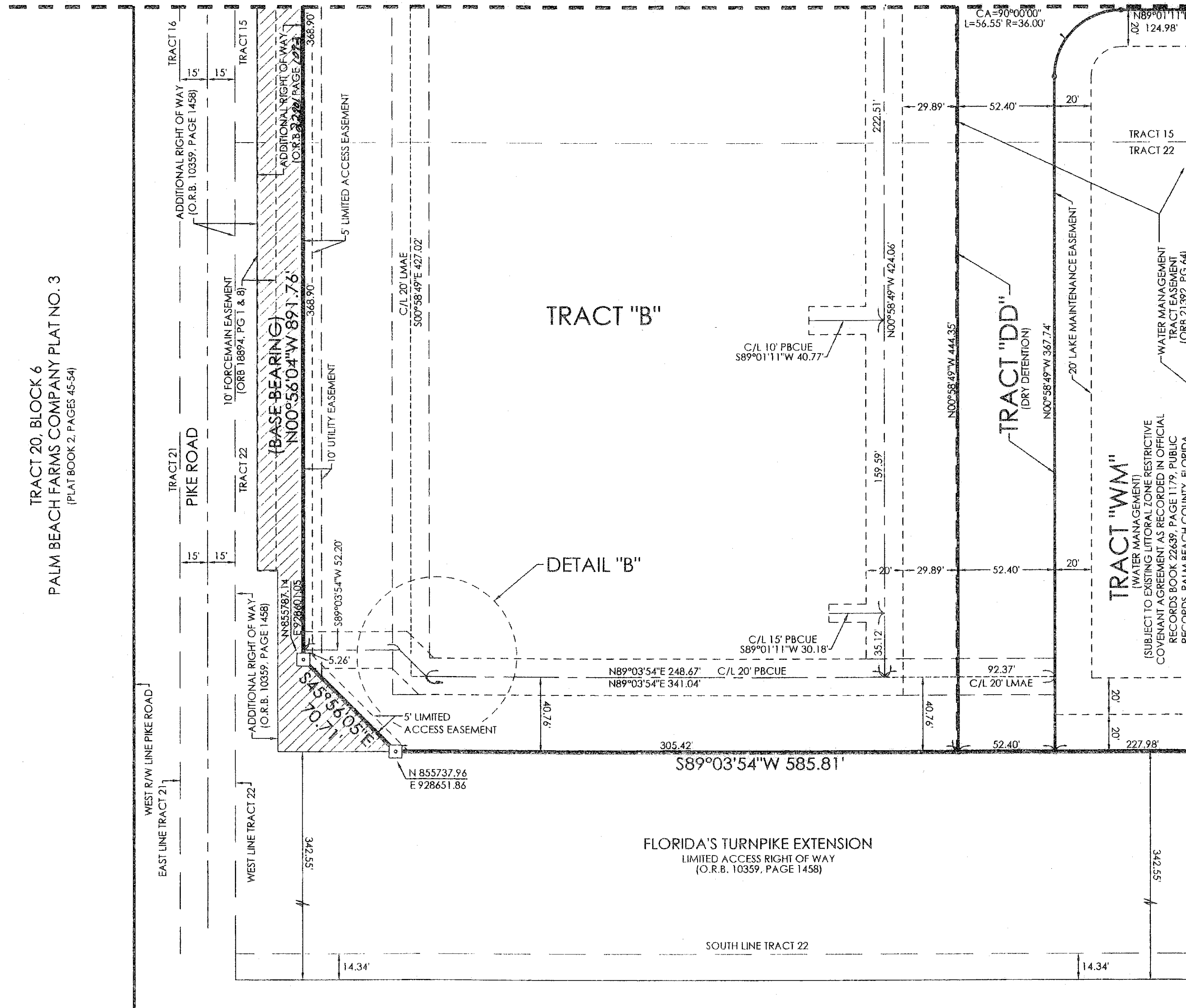


PROLOGIS PARK WEST PALM BEACH MUPD

BEING A PART OF TRACTS 14, 15, 22 AND 23, BLOCK 6, LYING NORTH AND WEST OF FLORIDA STATE TURNPIKE RIGHT-OF-WAY, PALM BEACH FARMS COMPANY PLAT NO. 3, RECORDED IN PLAT BOOK 2, PAGE 45, PUBLIC RECORDS, PALM BEACH COUNTY, FLORIDA AND LYING IN SECTION 33, TOWNSHIP 43 SOUTH, RANGE 42 EAST, PALM BEACH COUNTY, FLORIDA

170

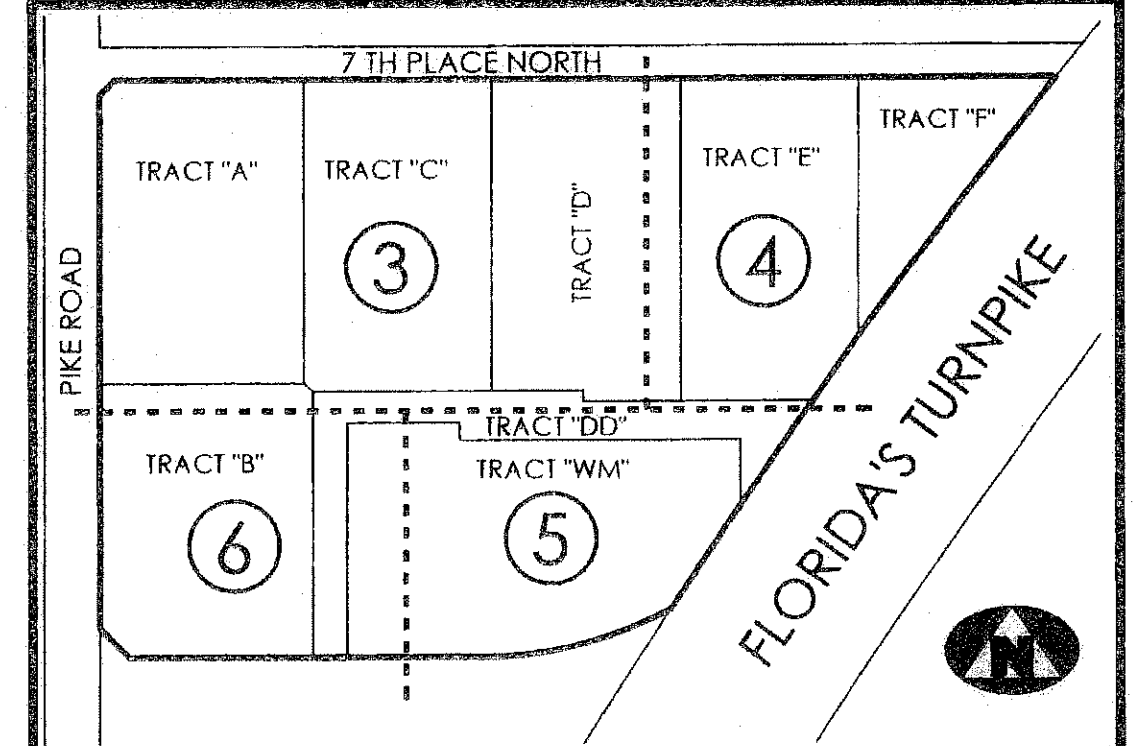
FOR MATCH SEE SHEET 3 OF 6



COORDINATE NOTES AND LEGEND

1. THE COORDINATES SHOWN HEREON ARE STATE PLANE GRID COORDINATES ACCORDING TO THE TRANSVERSE MERCATOR PROJECTION OF THE FLORIDA EAST ZONE, N.A.D. 83, PER THE 1990 ADJUSTMENT.
2. THE LINEAR DIMENSIONS SHOWN HEREON ARE GROUND DISTANCES IN U.S. FEET AND DECIMAL PARTS THEREOF.
3. THE GROUND DISTANCE TO GRID DISTANCE SCALE FACTOR IS 1.000027 (GROUND DISTANCE X SCALE FACTOR = GRID DISTANCE).

SHEET INDEX (NOT TO SCALE)



LEGEND

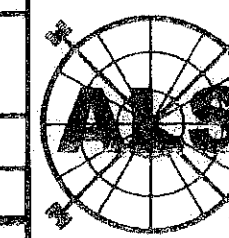
C/L	DENOTES A CENTERLINE	R	DENOTES RADIUS DISTANCE	□	DENOTES A SET PERMANENT REFERENCE MONUMENT (L.B. 7344)
DE	DENOTES DRAINAGE EASEMENT	L	DENOTES ARC LENGTH DISTANCE	N 855737.96	DENOTES NORTHING COORDINATE
UE	DENOTES UTILITY EASEMENT	CA	DENOTES CENTRAL ANGLE	E 929237.58	DENOTES EASTING COORDINATE
PG	DENOTES PAGE	ORB	DENOTES OFFICIAL RECORDS BOOK		
(RW)	DENOTES RIGHT-OF-WAY				
	□ DENOTES LMAE (LAKE MAINTENANCE ACCESS EASEMENT)		▨ DENOTES ADDITIONAL RIGHT OF WAY (O.R.B. 2289, PAGE 1012)		

SURVEYOR'S NOTES

1. THE BEARING BASE FOR THIS PLAT IS NORTH 00°58'04" WEST AS SHOWN ALONG THE EAST RIGHT-OF-WAY LINE FOR PIKE ROAD AS RECORDED IN OFFICIAL RECORDS BOOK 2289, PAGE 1012, PALM BEACH COUNTY, FLORIDA.
2. IN THOSE INSTANCES WHERE UTILITY OR DRAINAGE STRUCTURES ARE CONSTRUCTED IN CONFLICT WITH THE PLATTED PERMANENT CONTROL POINT POSITION STRADDLERS MONUMENTED AS PERMANENT CONTROL POINTS WILL BE SET TO REFERENCE THE PLATTED POSITION.
3. THIS INSTRUMENT WAS PREPARED BY WM. R. VAN CAMPEN, P.S.M. NO. 2424, IN AND FOR THE OFFICES OF ASSOCIATED LAND SURVEYORS, INC., 4152 WEST BLUE HERON BOULEVARD, SUITE 121, RIVIERA BEACH, FLORIDA, 33407

FILE: 01-0034PLAT

FB:	WO NO.: 01-0034
SCALE: 1"=40'	DATE: 10-3-2007
DWN: KVC	SHEET 6 OF 6



ASSOCIATED LAND SURVEYORS, INC.
 4152 W. BLUE HERON BOULEVARD-SUITE 121
 RIVIERA BEACH, FLORIDA 33404
 PHONE: (561) 848-2102 FAX: (561) 844-9659
 EMAIL: ALLSSURVEY@AOL.COM